

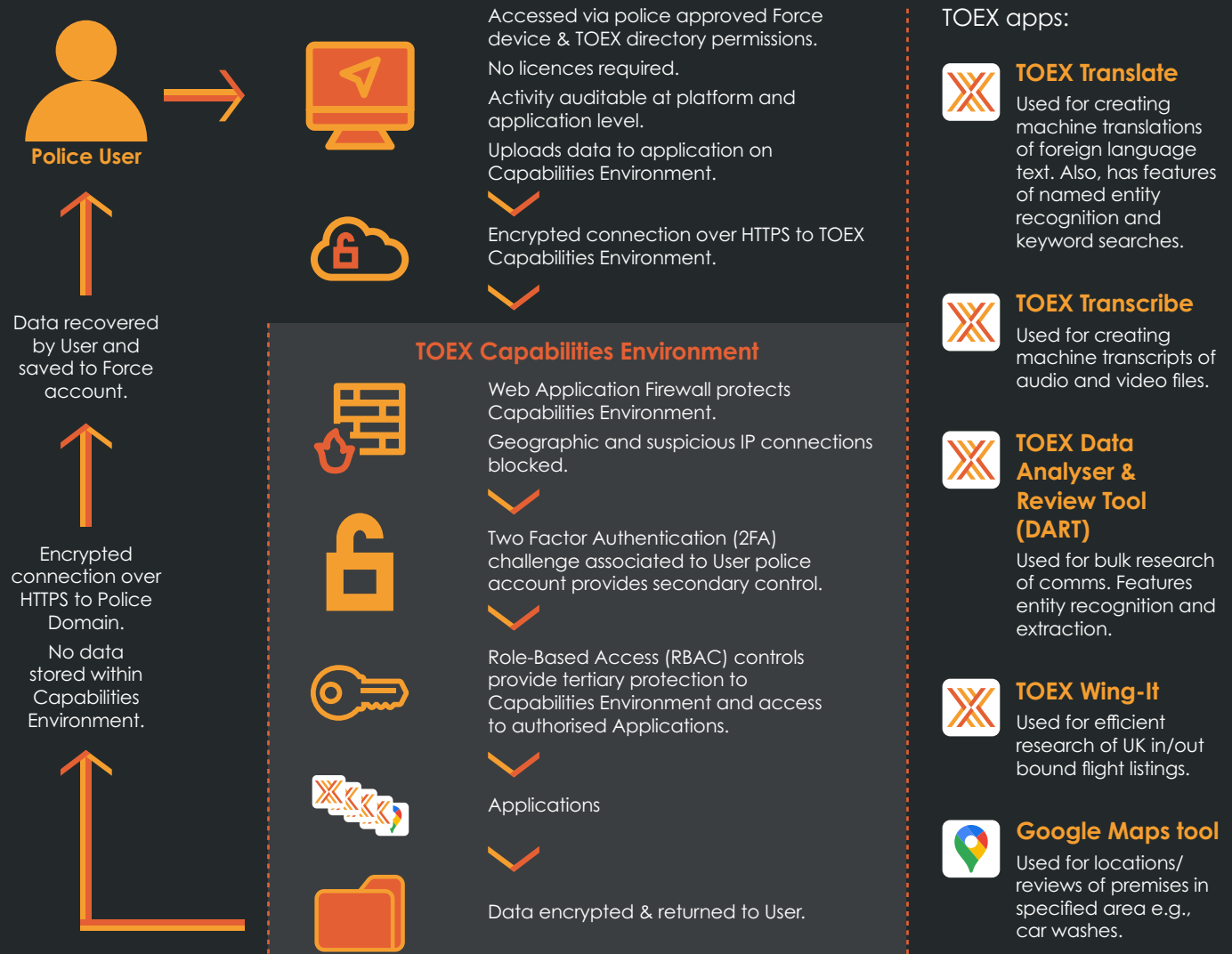
July 2024

Technical Enablers

TOEX Capabilities Environment (CE) – force access:

TOEX continues to innovate and develop new technical capabilities in the fight against organised exploitation. Some of these tools are suitable for wider application across policing – with access granted to the secure cloud-hosted CE ('App store'), so tools can be leveraged for operational purpose. The CE went 'live' in January 2024, originally for c.120 TOEX users across England & Wales.

Five forces (Norfolk, Suffolk, West Mercia, Sussex, and Surrey) are to be given access by October (c.1000 users), with the potential for incremental upscale across 43 forces thereafter. As well as supporting a means to deliver industry innovation to policing investigations, TOEX is refining and developing tools capable of generating significant efficiencies in time and resourcing.



Innovation:

Industry partners Simpson Associates have won the **global 2024 Microsoft Community Response Partner of the Year** because of their delivery alongside our TOEX Technical team. The award recognises innovation and unique services or solutions based on Microsoft technologies, that are helping to solve challenges faced by communities and making a significant social impact, with award entries made by companies from over 100 countries across the world.

Also, TOEX are in partnership with Swansea University and have begun to trial **'Dragon-Spotter', an AI-integrated tool** for detecting online grooming, designed specifically for deployment by law enforcement agencies. Initial tests, using language scripts and machine learning, indicate the tool can recognise over 91% of grooming language in each conversation. TOEX will be trialling it as a triage and prioritisation tool against online child abuse threats.

TOEX Data Analytics:

The **TOEX Data Platform** continues to add value to local, regional, and national policing teams. For 9 county police forces, TOEX's unique conflation of missing persons data, crime data and the overlay of specific national policing data sets has allowed TOEX data practitioners to break new ground in the understanding and presentation of risk affecting vulnerable young people. Visualising this risk via accessible reporting through PowerBI has enabled dedicated teams in force to proactively identify and safeguard children who may be at risk of County Lines or sexual-related exploitation.

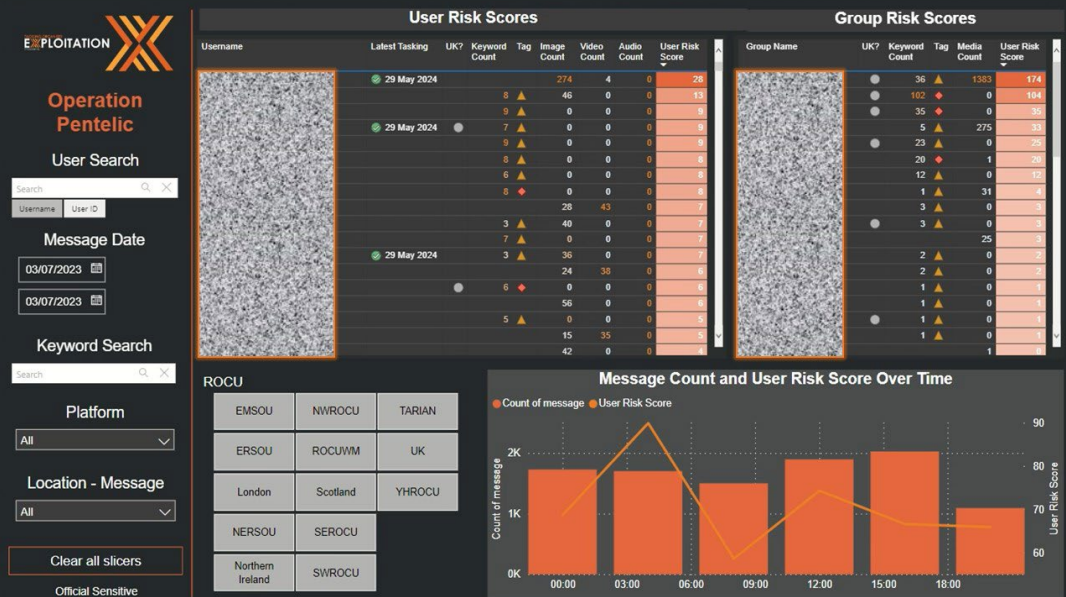
Nationally, TOEX has been bringing unique data sets together and working with those dedicated to the targeting of suspects who prey on children online.

The realisation of **Operation Pentelic** has provided Under Cover Online (UCOL) operatives across the UK a unique ability to target and disrupt the online predators who pose real and imminent risk to children.

The tool uses chatroom information extracted from the internet and overlays language learning models and AI to identify potential risk requiring

human review. It can also prioritise those threats, should it identify indications of access to children or contact offending.

Given the vast scale of these data sources, the ability to automate the triage and prioritisation of that information will significantly improve the policing response to serious threats against children.



TOEX Timeline

